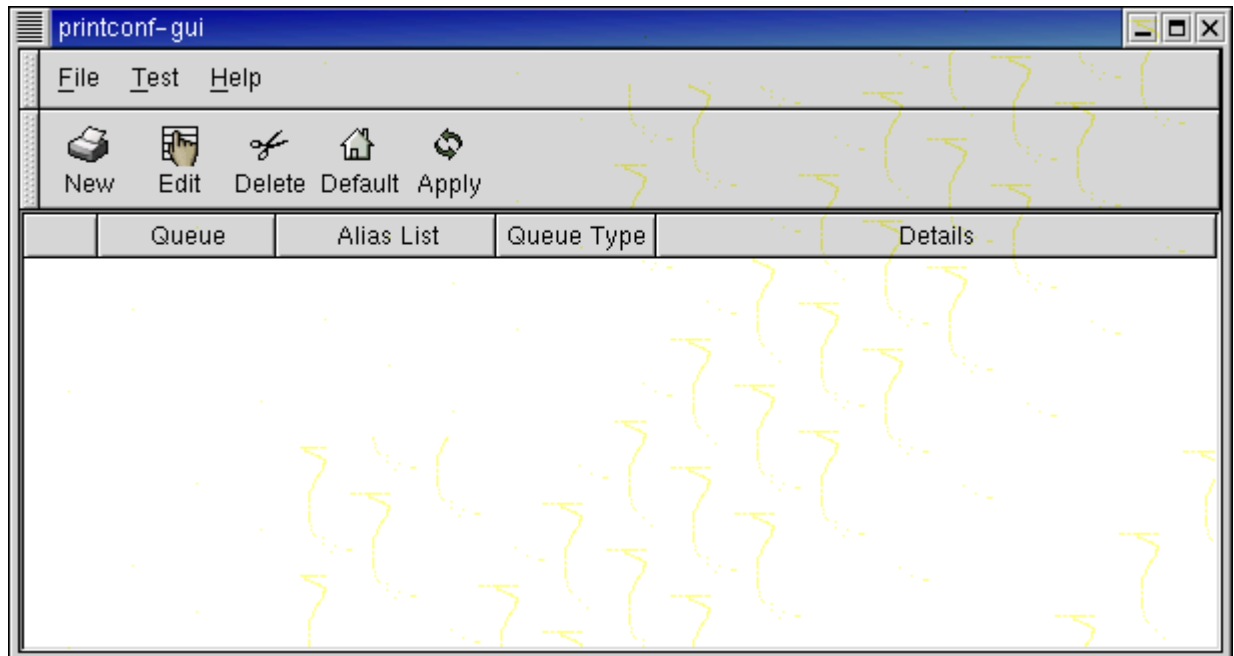


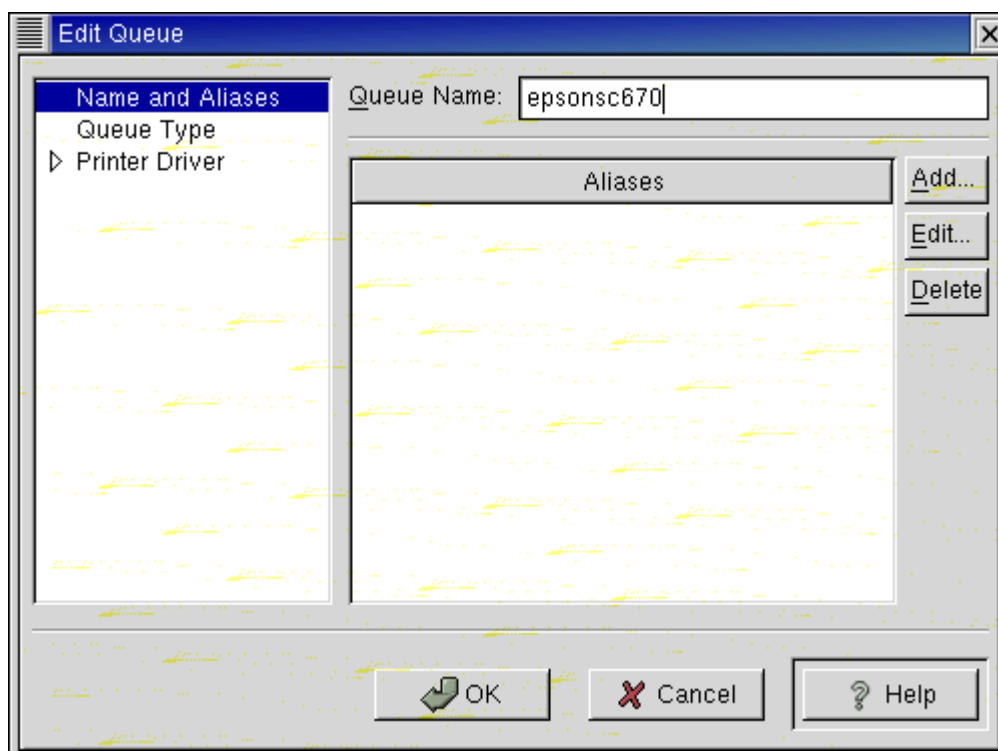


## Printer Configuration of RedHat Linux 7.1

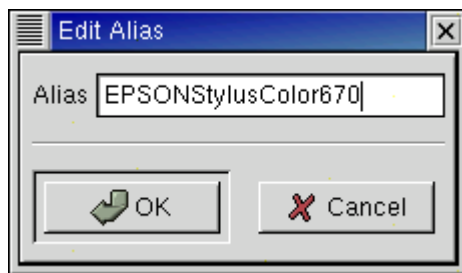
- 1.KDE / System / Printer Configuration (if you are in KDE)  
GNOME / Programs / System / Printer Configuration (if you are in GNOME)
- 2.Click the 'New' button.



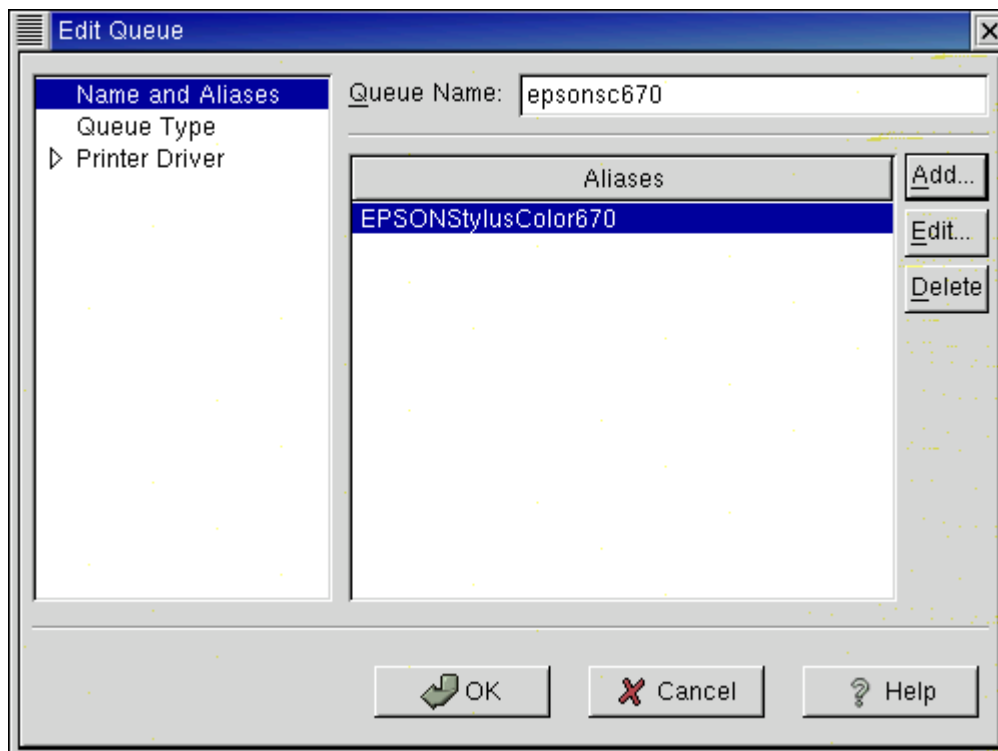
- 3.Input the queue name.  
(For example: epsnsc670)  
Click the 'Add' button to input the alias.



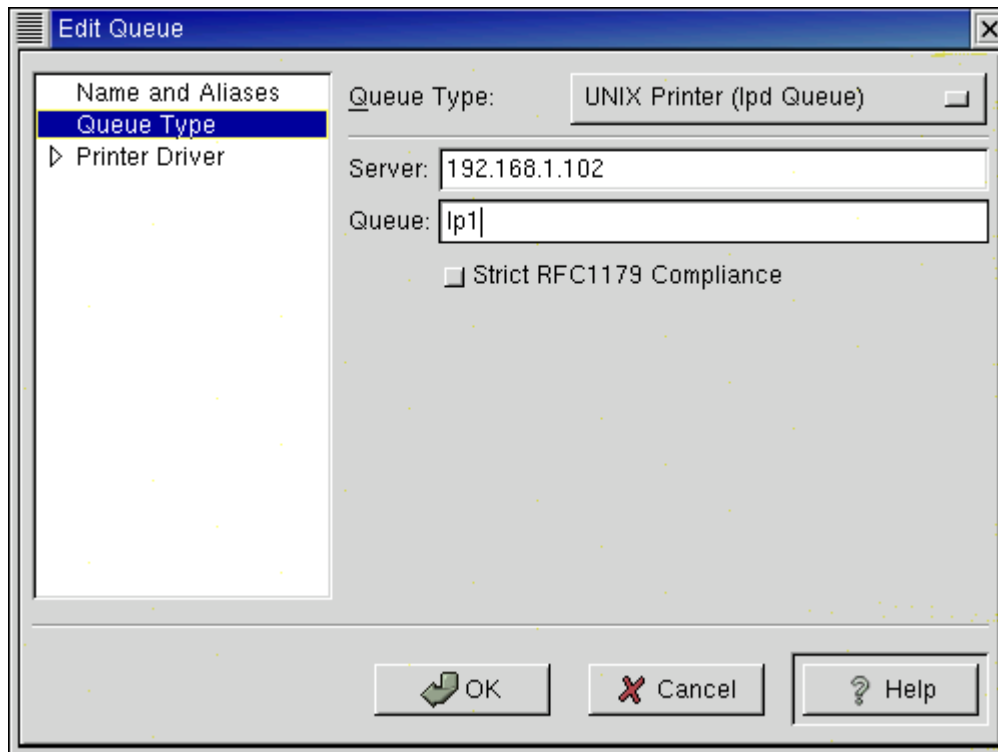
4. Input the alias, and then click the 'OK' button.



5. Set the queue type.

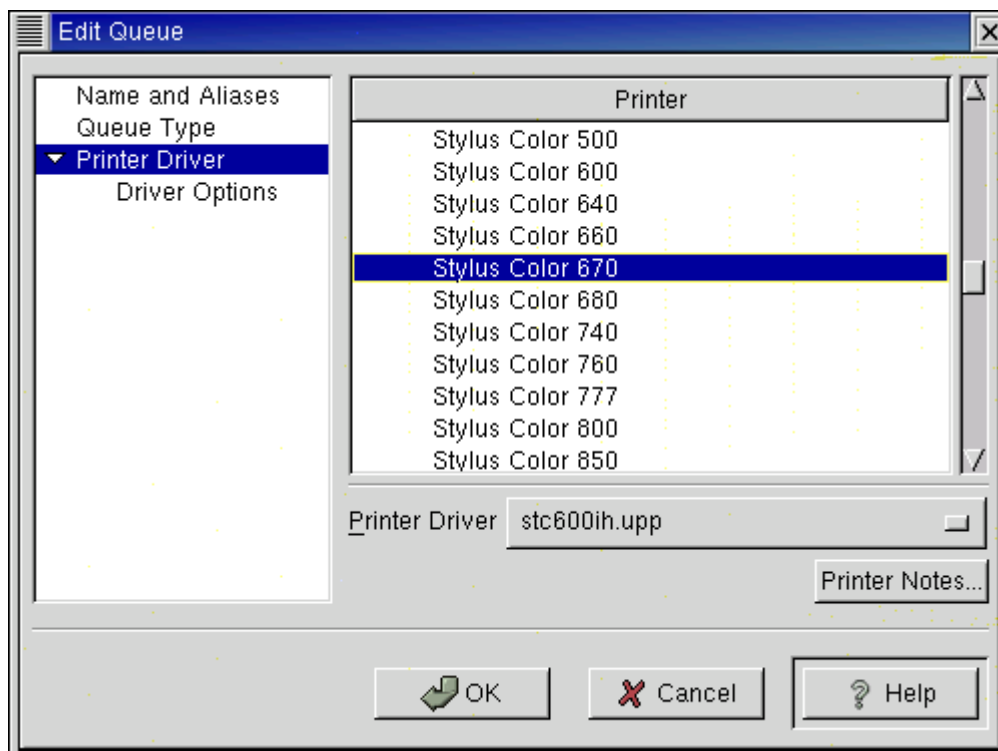


6. Queue Type: UNIX Printer (lpd Queue)  
Server: Input the IP of the printer server  
(For example: 192.168.1.102)  
Queue: Input the port name of the printer server  
(For example: lp1)

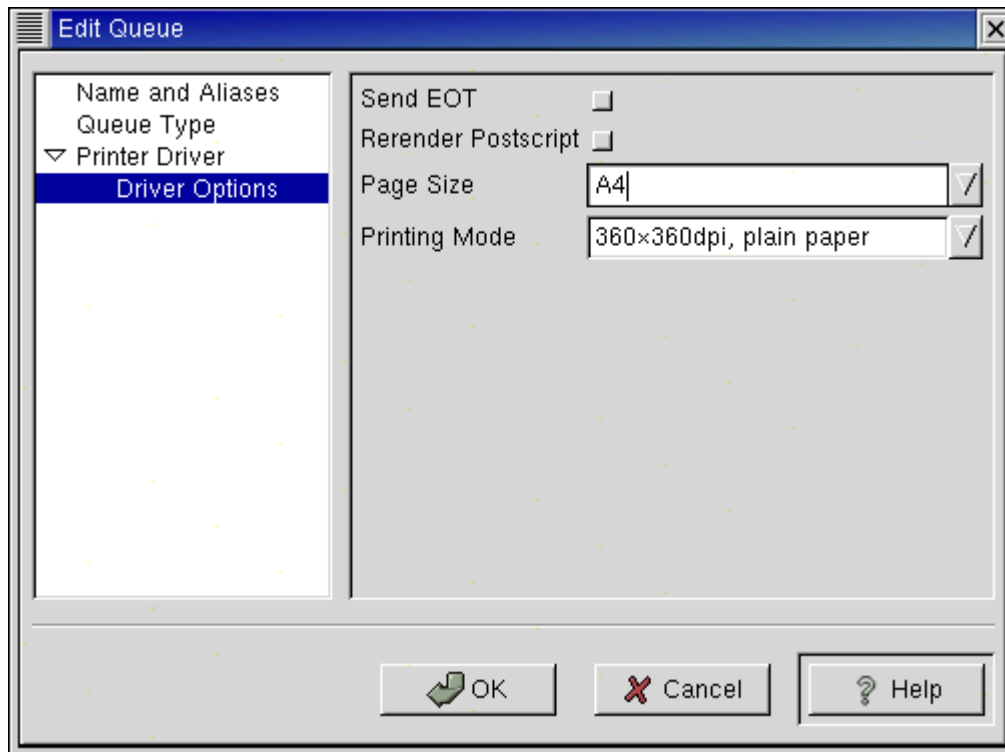


7. Choose the printer driver.

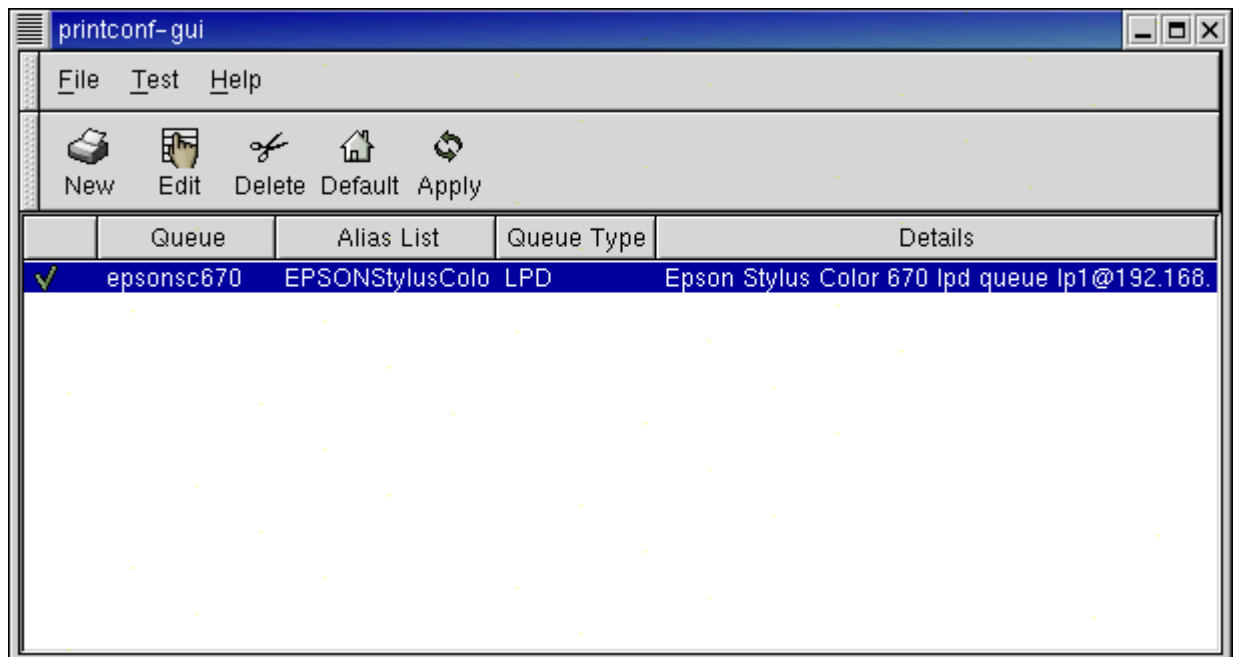
If you don't find it, you can also choose the Postscript driver or Raw.



8. Set the driver options and then click the 'OK' button.



9. Click the 'Apply' button in order to restart the lpd.



10. Click the 'OK button'. Finish.

