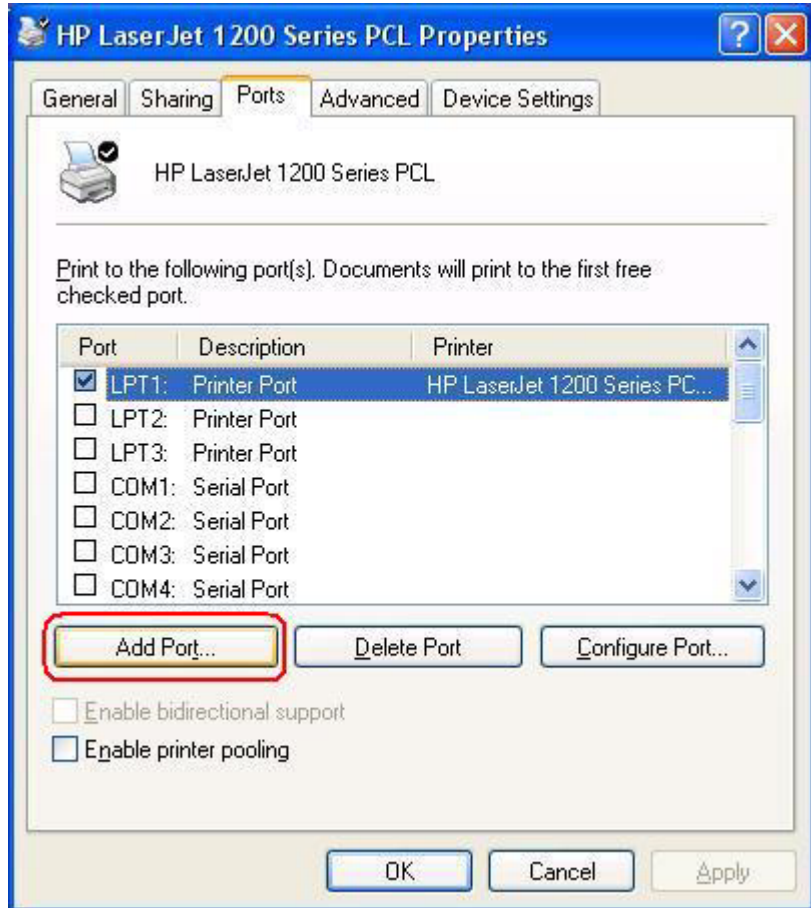
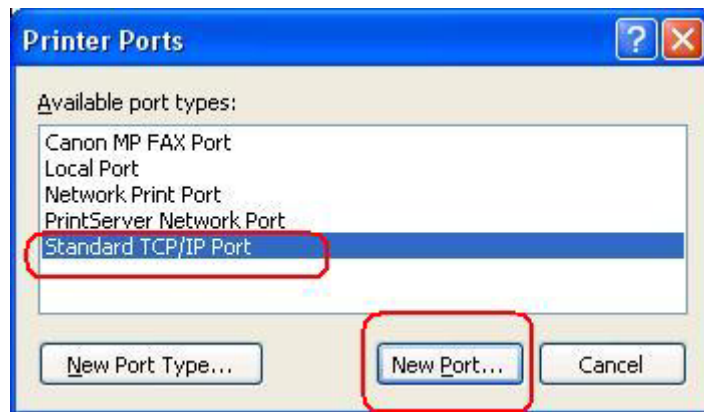


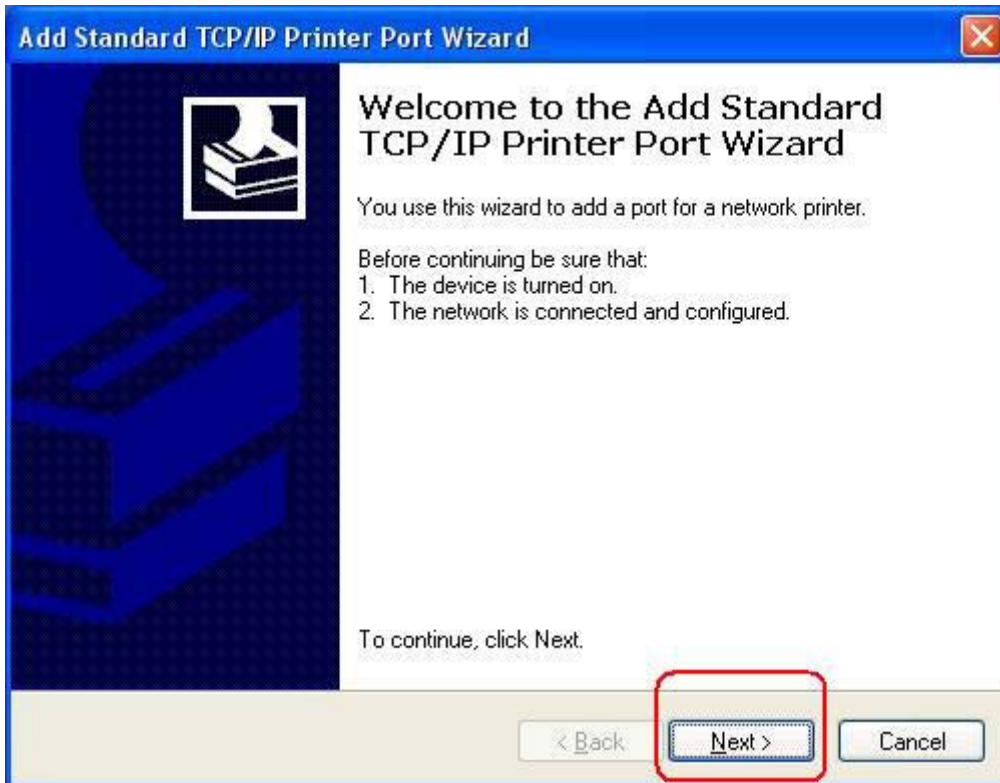
1. Enter the properties of printer icon, and then click **“Add Port”**.



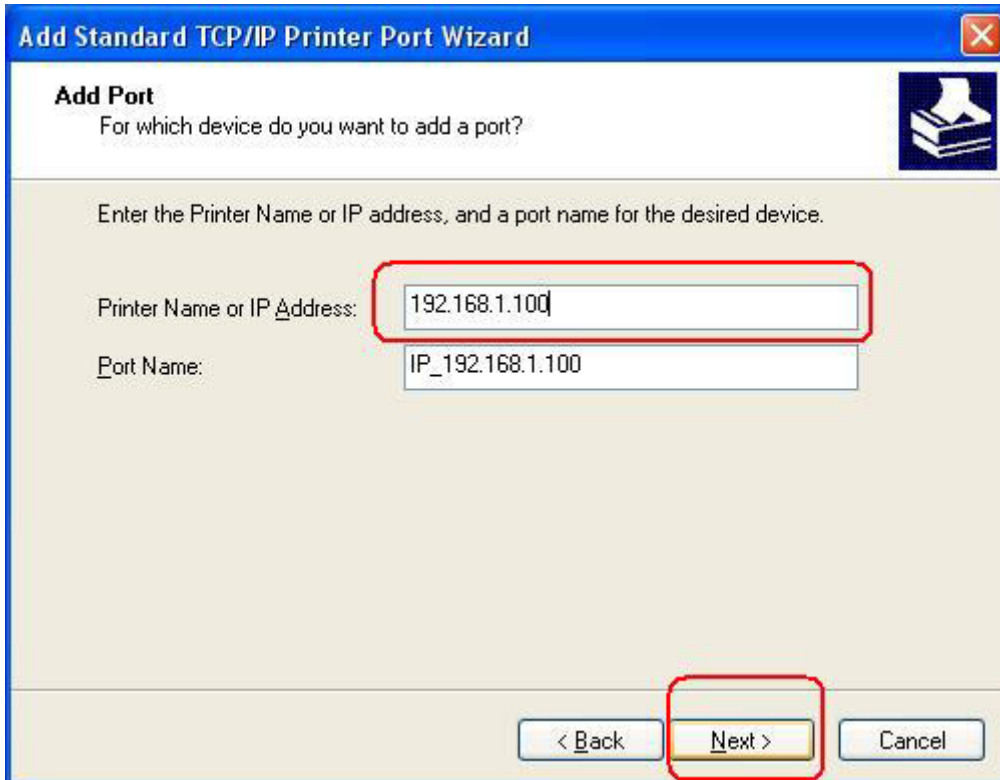
2. Choose **“Standard TCP/IP Port”**, and then click **“New Port”**.



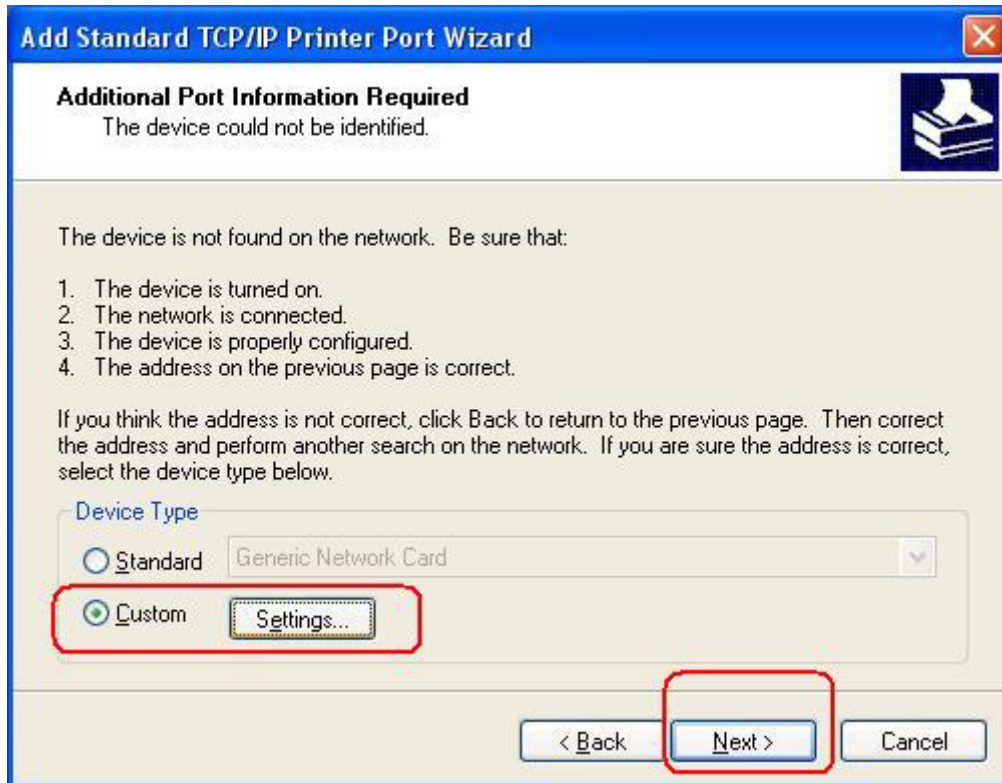
3. Click **Next**.



4. Input the IP address of your print server, and then click **Next**.



5. Choose “**Custom, Settings**”, and then click “**Next**”.



6. Choose “**LPR**”, input the default queue name of print server: **lp1**. Then click “**OK**”.
(lp1 for print server port-1, lp2 for port-2 and lp3 for port-3)

