



Wireless-N USB Adapter +5dBi Antenna

UGL2430-U2HA

QUICK START GUIDE

Version 1.0

2010/04/21



Tested To Comply
With FCC Standards
FOR HOME OR OFFICE USE



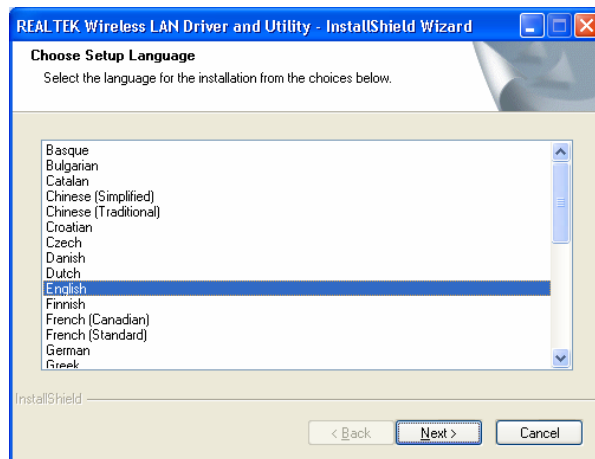
1. BOX CONTENTS

- ◆ Wireless LAN Adapter
- ◆ 5 dBi Antenna
- ◆ Quick Start Guide
- ◆ Driver CD

2. INSTALL DRIVER/UTILITY

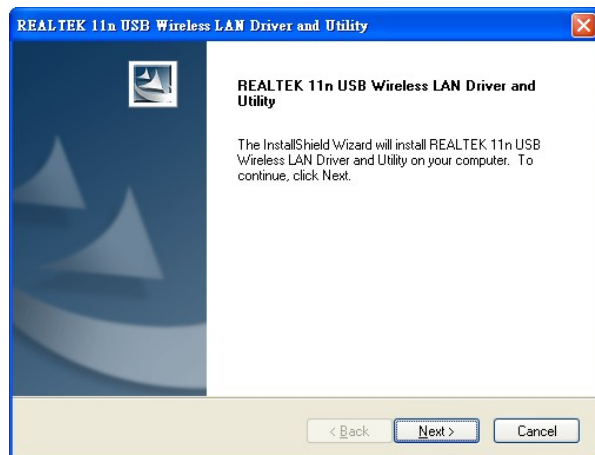
Step 1 :

Insert the installation CD into your CD-ROM. Choose the Setup Language and click **Next** button.

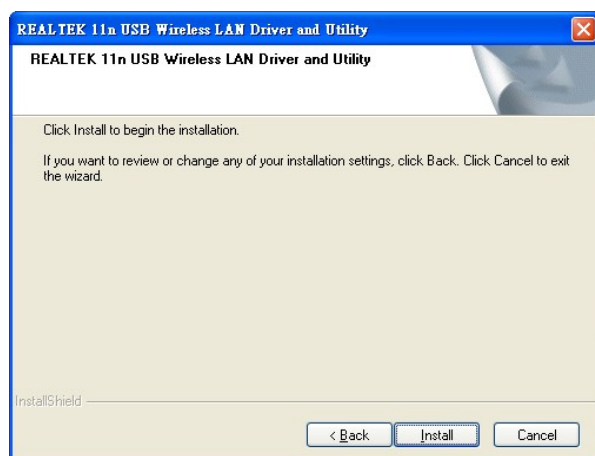


Step 2 :

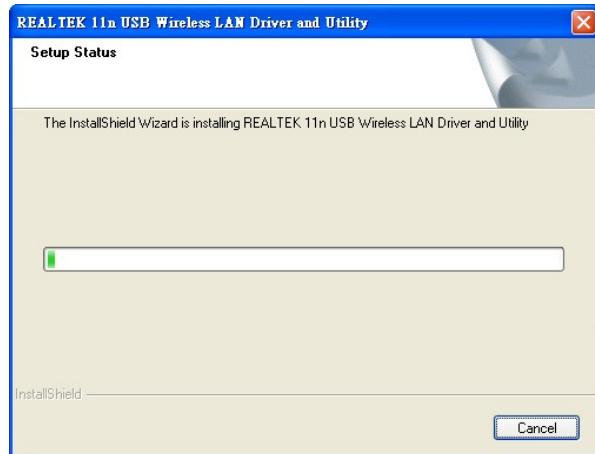
Installation descriptions shown. Click **Next** to continue.



Click **Install** to begin the installation



Installing & configuring wlan utility



Installing Drivers.



Step 3 :
Click **Finish** to complete installation

