

2 / 4 port KVM Switch USERS MANUAL

Introduction

Thank you for purchasing 2/4 port KVM switch. 2/4 port KVM switch can save your MONEY, TIME, SPACE, EQUIPMENT and POWER.

Controlling multiple PCs from One Keyboard, Mouse and VGA Monitor. 2/4 port KVM switch is loaded with features such as hot-key, front panel push button and auto scan control. It has complete keyboard and mouse emulation for simultaneous PCs boot-up process.

Features

2/4 port KVM switch is compact size design, easy portable.

Supports Microsoft Intellimouse , MicroSoft Intellimouse Explorer Logitech Net Mouse and the other fully Microsoft compatible mouse

Support DOS, Win3.X, Win95/98/98SE/2000/ME/XP, WinNT, Netware, Unix, Linux

Hot Plug - Add or Remove Connected PCs for Maintenance Without Powering Down the KVM switch or PCs.

Very High Video Quality - Up To 1920X1440, Bandwidth: 200MHz

No Software Required - easy PC selection via Push Buttons, Hot Keys

Auto Scan Mode for monitoring PCs

Keyboard status restored when switching PCs

LED Display for easy status monitoring

Buzzer sound for switching port confirmation.

Package Contents

2-port KVM Switch	4-port KVM Switch
2 port KVM Switch (Plastic) User's manual	4 port KVM Switch (Plastic) User's manual

Technical Specifications

Functions	2-port KVM Switch	4-port KVM Switch
PC Port	2	4
Console Port	1	1
MAX PC Connections	2	4
LED	2	4
PC Port Connector (All Female Type)	PS/2 Keyboard mini-Din 6 pin PS/2 Mouse Mini-Din 6 pin VGA HDB 15pin	
Console port connector (All Female Type)	PS/2 Keyboard mini-Din 6 pin PS/2 Mouse Mini-Din 6 pin VGA HDB 15pin	
PC selection	Hot Key / Button	
On Screen Display Control	No	
Scan Intervals	8sec.	
Keyboard Emulation	PS2	
Mouse Emulation	PS2	
VGA Resolution	1920X1440	
Bandwidth	200MHz	
Daisy Chain and Levels	NO	
Housing	Plastic	Plastic
Size	Mini Desktop	Desktop
Weight (g)	140g	300g
Dimension (mm)	110(L) X 74(W) X 29(H)	190(L) X 74(W) X 29(H)

System Requirements Specifications

Functions	2-port KVM Switch	4-port KVM Switch
Console side	One VGA Monitor One PS/2 Keyboard One PS/2 Mouse	One VGA Monitor One PS/2 Keyboard One PS/2 Mouse
Computer Side	Two HDB 15 pin male to male VGA cables Two PS/2 cable male to male for Keyboard Two PS/2 cable male to male for Mouse	Four HDB 15 pin male to male VGA cables Four PS/2 cable male to male for Keyboard Four PS/2 cable male to male for

Hardware Installation

Before installation, please make sure all of peripherals and computers have been turned off.

1. Connect the Keyboard, VGA, Mouse cables to the computer ports of KVM switch
2. Connect the Keyboard, VGA monitor, and Mouse to the console port of KVM switch
3. After Powering on computers and finishing the boot-up process, you can start to go KVM switch.

Note:

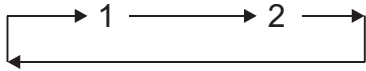
Please don't switch the PC port (i.e. Don't press the push button of KVM switch or run hot key) during the computers are under boot-up process.

Usage

The push Button:

Pressing the button cyclically through all the ports.

2 port KVM Switch



Normally, there is one LED is always lit (i.e. the console is connected to this PC port) for one PC port and the other PC port's LED is off, when you power on KVM switch.

When you select one of two PCs and it is shut down, the selected port LED flashed.

4 port KVM Switch



4 port KVM Switch has separate push button on the panel

You can press the buttons in order like mentioned-above diagram or also press the destination button you want directly.

When you select one of four PCs and it is powered on, the selected port LED is lit.

When you select one of four PCs and it is shut down or disconnected a PC, the selected port LED flashed.

Keyboard Hot Key Commands:

You can also conveniently command 2 port KVM Switch KVM to switch ports through simple key sequences. To send commands to KVM, The SCROLL LOCK key must be pressed twice within 2 seconds. You will hear a beep for confirmation.

Below are the different commands:

SCROLL LOCK	SCROLL LOCK	↑	Previous Channel	SCROLL LOCK	SCROLL LOCK	1 (or 2 or 3 or 4)	select PC port directly
SCROLL LOCK	SCROLL LOCK	↓	Next Channel	SCROLL LOCK	SCROLL LOCK	B	Beeper On (Factory default Off for Scan Mode)
SCROLL LOCK	SCROLL LOCK	S	Auto Scan				

To get out of Auto Scan Mode, Press any key or SPACE bar.

Troubleshooting

Ensure that all cables are well seated. Label all of cables with the number for each respective computer to avoid confusion.

1. KVM switch draws the power from keyboard port of computers. If the computer like laptop computer, notebook computer or the other computer cannot support enough power to KVM switch, please add a DC 5V~9V, 100mA~1A to the power jack. The power jack polarity is center positive.
2. Don't press any keys on the keyboard while the selected computer is booting up. Otherwise, it might cause the keyboard error or keyboard is not detected at PC side.
3. The computer boot up fine, but keyboard doesn't work
Make sure the keyboard works when directly plugged into the computer.
Try a different keyboard, but use only 101, 102 or 104-key keyboard.
4. The Mouse is not detected during PC boot up.
Make sure the mouse works when directly plugged into the computer.
Make sure the mouse is a true PS/2 mouse. A combo mouse will work just as long as it is set for PS/2 mode with the correct adapter.
Try a different mouse.
5. Avoiding moving the mouse or pressing the mouse buttons when switching the port.