

UGS5824-RXG

24-Port Unmanaged Gigabit Switch

with 2 x Mini-GBIC Ports

Rack-Mount Gigabit & GBIC Ports Uplink Connectivity



FEATURES

- 24 x 10/100/1000Mbps RJ-45 Ethernet ports
- Provides 2 x Mini-GBIC optional fiber Ports for easy expansion to other mini-GBIC equipped Switches
- Complies with IEEE802.3, 802.3u, 802.3ab, 802.3x 802.3z standard
- Supports Auto MDI/MDI-X function on all ports
- Supports Auto Speed Detection and Full/Half Duplex mode
- Dedicated bandwidth of up to 2000Mbps for maximum throughput
- Advanced Store-and-Forward package switching that optimizes data transfers
- Full-duplex 802.3x flow control and half duplex back-pressure
- Efficient MAC address learning engine supports 8K MAC address
- Integrated 400K bytes buffer memory and 9K jumbo frame
- Supports extensive LED indicators for network diagnostics

PACKAGE CONTENTS

- One 24-port Gigabit Rackmount Switch
- One User's Manual
- One AC Power Cord
- One set of Rack-mount Bracket with Screws

OVERVIEW

The UGS5824-RXG is a powerful, high-performance Gigabit Ethernet switch. Easily boost your networking throughput, the 19" unmanaged UGS5824-RXG provides 24* 10/100/1000Mbps Gigabit RJ-45 ports that lead you to a real Gigabit connection. Users are now able to transfer large and high bandwidth-needed files faster and hence get a real efficiency improvement. In addition to the cooper ports, 2 of the ports support fiber connection with the 2 equipped Mini-GBIC ports for long-distance communication.

UGS5824-RXG offers users with fast and reliable network connection. The store-and-forward architecture filters errors and forwards packets in a non-blocking environment. Flow control ensures the correctness of data transmitting. The 802.3x and backpressure flow control mechanisms work respectively for full and half duplex modes.

The switch features with easy installation and maintenance. It supports Nway auto-negotiation protocol that detects the networking speed (10/100/1000 Mbps) and the duplex modes (Full/Half) automatically. Auto-MDI/MDI-X function alleviates the effort to use crossover cables.

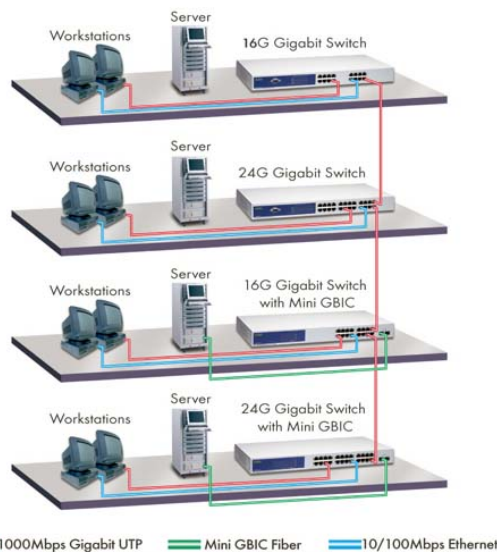
The switch is plug-n-play without any software to configure and also fully compliant with all kinds of network protocols. Moreover, the rich diagnostic LEDs on the front-panel can provide the operating status of individual port and whole system.

SPECIFICATIONS

System Specifications	
Ethernet Standard	IEEE802.3 10BASE-T IEEE802.3u 100BASE-TX IEEE802.3z/ab 1000BASE-T IEEE802.3x Full duplex operation and flow control
Interface	24 * 10/100/1000Mbps RJ-45 Gigabit Ethernet ports 2 * Mini-GBIC Ports (GBIC Module Option)
Uplink	Auto MDI/MDI-X (Auto Crossover)
Network Speed	10/100/1000Mbps & Full/Half duplex mode auto detection (1000Mbps for Full-duplex only)
Diagnostic LED	Power; Link/Act: 1000Mbps
MAC Address Entry	8K MAC entries
Memory	400K bytes buffer memory, 9K bytes jumbo frame
Filtering / Forwarding Rate	10Mbps: 14,880pps/14,880pps 100Mbps: 148,800pps/148,800pps 1000Mbps 1,488,100pps
Installation	19-inch Rack-Mount size
Operating Temperature	0° ~ 40°C (32° ~ 104°F)
Operation Humidity	10% ~ 90% (non-condensing)
Dimension	441 (L) x 196 (W) x 44 (H) mm
Weight	2.64kg
Power Supply	100 ~ 240VAC, 50~60Hz Universal Input
Emission Certification	CE, FCC Class A, VCCI Class A

Application Diagram

24-Port Gigabit Ethernet Switch with Mini GBIC Application Diagram



ORDERING INFORMATION

Model	Description
UGS5824-RXG	24-port Gigabit Unmanaged Ethernet Switch with 2-Mini GBIC Ports (19")
UGM2010-MM	1-port Mini GBIC Module 1.25G Multi-Mode, 550m (Module Option)
UGM2020-S10	1-port Mini GBIC Module 1.25G Single-Mode, 10km (Module Option)

EUSSO Technologies, Inc. is a dedicated data communication and networking company. With professional experiences in design, production, marketing and service support, we deliver the full range networking products including Gigabit Ethernet, Fiber Optic, Wireless LAN, Switches, Hubs, LAN cards, PCMCIA adapters, Converter, Transceivers. As well as Internet Telephony Gateway, Print Servers, Internet Sharing Servers and many others.

2006/7/27 ver 1.0



EUSSO Technologies, Inc.

6F, No.389, Sec.2, Chung Shan Road, Chung Ho City, Taipei 235-58, Taiwan

TEL:+886 (2) 8221-4616 E-mail:sales@eusso.com

FAX:+886 (2) 8221-4607 <http://www.eusso.com>